



**Online Entries Close**  
13/8/2019 : International players  
6/8/2019 : Australian players

**12-15 SEPTEMBER**  
**ADELAIDE, AUSTRALIA**

 **titanium security**  
**arena**  
44A Crittenden Road,  
Findon, South Australia



**SOUTH AUSTRALIA INTERNATIONAL 2019**  
**INTERNATIONAL CHALLENGE**



# South Australia International 2019

## Adelaide, AUSTRALIA

### 12-15 September

- National Association:** Badminton Australia  
Unit 15, No 8 Techno Park Drive, Williamstown, VIC 3016, AUSTRALIA  
Phone: +61 (3) 93974722  
Website: [www.badminton.org.au](http://www.badminton.org.au)
- Event Organiser:** South Australia Badminton Association  
Website: [www.badminton.org.au](http://www.badminton.org.au)
- Event Director:** Simon Oaten  
Email: [ogatense@gmail.com](mailto:ogatense@gmail.com)  
Phone: 0434 624 810
- Event websites:** <https://www.facebook.com/events/1132600010213245> and  
[www.badminton.org.au](http://www.badminton.org.au)
- Dates:** Thursday 12 – Sunday 15 September 2019
- Venue:** Titanium Security Arena  
44A Crittenden Road, Findon, South Australia
- Sanctioned by:** Badminton Oceania and Badminton World Federation – International Challenge
- Prize Money:** The prize money will be paid directly to players at the completion of the event in Australian dollars.
- Referee:** Peter Cocker  
Email: [petercwa@inet.net.au](mailto:petercwa@inet.net.au)  
Phone: +61 438 286238
- Deputy Referee:** Lynne Nixey  
Email: [nixey4@yahoo.co.nz](mailto:nixey4@yahoo.co.nz)  
Phone: +64 21 526603
- Entries close:**  
**International entries** close Tuesday 13 August 2019, 23:59 hours BWF Headquarters time, (+8:00 hours GMT)  
**Australian Player entries** close Tuesday 06<sup>th</sup> August 2019, 23:59 local time



**Entries:**

All players in the tournament will be deemed to have read and accepted the conditions under which the tournament events are to be conducted. The competition regulations of the BWF shall apply.

The organisers will NOT be responsible for any injury sustained, at any time, by any player or official arising from their participation in this Tournament. Any costs incurred for medical treatment and/or hospitalisation shall be borne by the Member Association of the player/official concerned.

All International entries are to be submitted online by the competitors National Badminton Association (M.A)

Member Associations are to log onto South Australia International 2019:

<https://bwf.tournamentsoftware.com/sport/tournament.aspx?id=DF63ED0D-CCAE-4124-BF09-54D674A7B0FE>

and submit the entries online.

A username and password is required to submit entries. This can be obtained from the BWF.

Please contact Shan Ramachandran at [s.ramachandran@bwfbadminton.org](mailto:s.ramachandran@bwfbadminton.org)

The online entry page will automatically close on Tuesday 13 August 2019 at 23:59 hours BWF Headquarters time (+08:00h GMT) and you are required to submit the entries on time. Late entries will not be accepted.

After the closing date, the BWF Online Entry System will send a notification to all participating Member Associations confirming receipt of final entries. Receipt of this notification is the conclusive evidence of receipt of entries before the deadline. The Member Associations should contact BWF immediately if such notice is not received by the Wednesday (next day of the entries closing date) by noon BWF Headquarters time (+08.00h GMT) following close of entries.

If no objection is received by BWF by Friday 16 August 2019 (second day after the entries closing day) 23.59 hours BWF Headquarters time (+08.00h GMT) following the close of entries, the entries shall be deemed to be correct. No complaints / objections shall be entertained after this point.

**All entries must be submitted online.**

Australian Entries Only:

Please note – All Australian entries can only be submitted to BWF by Badminton Australia. **Australian entries close Tuesday 6th August 2019** at Badminton Australia office. This is to allow for checking and endorsement of all the Australian entries.

Australian entries must be submitted on tournament software.

<http://www.tournamentsoftware.com/sport/tournament.aspx?id=2070B8F5-45EB-4D94-9C0A-9BA3F626C199>

Full payment must be paid prior to the start of the tournament. Participation will not be permitted if payment has not been received.

Events:	Event	Entries		Qualifying Round Maximum entries
		Main Draw	Qualifiers	
	Men's Singles	56	8	16
	Women's Singles	28	4	8
	Men's Doubles	28	4	8
	Women's Doubles	28	4	8
	Mixed Doubles	28	4	8

**Entry Fees:** All players are required to pay entry fees.  
The entry fee is USD 100 for International entries and AUD 100 for Australian entries per player.  
MA's will be invoiced on 27<sup>th</sup> August 2019, with payment due by 4<sup>th</sup> Sept 2019.  
No refunds for withdrawals will be given after 26<sup>th</sup> August 2019.

<b>Seedings and Draws:</b>	Entries Close	13 August 2019
	World Ranking date for M & Q	14 August 2019
	Publish M & Q	16 August 2019
	World Ranking date for Seeding	20 August 2019
	Publish Seeding Report	23 August 2019
	Last Date for Withdrawal without penalty	26 August 2019
	Draw Date	27 August 2019

**Prize Money: USD 25000 as below**

**Prize money will be converted from USD and paid in AUD at the event**

	MS	WS	MD (Pair)	WD (Pair)	XD (Pair)
<b>Winner</b>	\$2250	\$2250	\$2250	\$2250	\$2250
<b>Runner-up</b>	\$1125	\$1125	\$1125	\$1125	\$1125
<b>Semi-Finalist (2)</b>	\$375	\$375	\$437.50	\$437.50	\$437.50
<b>Quarter-Finalist (4)</b>	\$218.75	\$218.75	\$187.50	\$187.50	\$187.50

**Hours of Play:**

<b>Thursday 12 September</b>	Qualifying Rounds	From 9am	6 courts
	Mixed Doubles R32	From 1pm	6 courts
	Mens Singles R64		
	Womens Singles R32		
<b>Friday 13 September</b>	Championship Events:	From 9am	6 courts
	Rounds of 32 and 16		
<b>Saturday 14 September</b>	Quarter Finals	From 10am	3 courts
	Semi-Finals	From 5pm	2 courts
<b>Sunday 15 September</b>	Finals	From 10am	1 court

**\*\*The above times and schedule may be changed at the discretion of the Referee and Event Organiser\*\*\***

All matches will be scheduled to time.

Players must be available to play 10 minutes before their scheduled time.

**Practice Courts:**

Practice courts at the tournament venue will be available as from Wednesday 11 September 2019, 12pm.

Bookings to be made directly with the Event Director: [ogatense@gmail.com](mailto:ogatense@gmail.com)

**Meeting Times:**

The Managers meeting will be held at the Titanium Security Arena – Wednesday 11 September at 6pm.

All countries to ensure they have a representative at this meeting.

*It is compulsory that all team managers must attend the team managers meeting. Failing to attend the meeting a Member Association may be fined USD250 by Badminton Oceania. Member Associations can make a request someone to represent them at the meeting as long as the Referee is advised in advance.*

**Withdrawals:**

Will be managed according to the BWF regulations.

Withdrawals after **Monday 26 August 2019** shall automatically attract withdrawal fees as per BWF regulations.

Withdrawals until this date must be initiated through online entry system by logging on to the tournament link used for sending the entry. Withdrawals after that date must be informed by e-mail to the Event Director [ogatense@gmail.com](mailto:ogatense@gmail.com) and the Referee [petercwa@inet.net.au](mailto:petercwa@inet.net.au) as soon as possible.

Withdrawals after players arrive at the venue, notification of withdrawal must be made by the Team Manager and/or Player to the Referee in person.

**Transport:**

The closest airport is **Adelaide International Airport**. Pick up from **Adelaide International Airport** will be provided, providing the players are staying at the tournament official accommodation.

Details must be provided no later than Monday 02 September 2019 on the correct form, for pick-up to be arranged.

Any request after this date will not be accepted.

Requests for a refund of taxi charges will not be entertained.

Transport will **ONLY** be provided to players and officials staying at the official tournament accommodation venue: Quest King William South Apartments, 377-379 King William Street, Adelaide.

\*\*\*This includes airport pick-up and drop-off, transport to practice and the tournament venue\*\*\*

**Visa:**

If a visa is required to enter Australia, please complete the Visa Form and email to [ogatense@gmail.com](mailto:ogatense@gmail.com)

Please ensure that you allow sufficient time for the visa/s to be processed.

**Competition Rules and Regulations:**

The tournament will be conducted in accordance with the BWF General Competition Regulations and as per the Badminton Oceania Grade 3 Tournament Regulations.

**Shuttles:**

BWF approved YONEX AS50 shuttles will be provided, 2 speeds will be available.

**Clothing and Advertising:**

Clothing and advertising are in accordance with the BWF General Competition Regulations (sections 19-23). The name of the player is Mandatory on the back of all player's shirts, the country name is optional however if it is on the shirt it must comply with BWF regulations.

Players should ensure that they read these regulations and that their clothing complies with these regulations.

**Doping Control:**

Doping control in badminton, in accordance with BWF Anti-Doping Regulations, is conducted out-of-competition and in-competition with the collection of urine and/or blood samples.

Athletes are responsible for any substance found in their body. Before an athlete takes any medication, they should check with their doctor, and if necessary, get a Therapeutic Use Exemption (TUE).

For more information about anti-doping, please visit the BWF website:

<https://corporate.bwfbadminton.com/integrity/anti-doping-overview/>

**Additional Information:**

A cafeteria will operate during the hours of play at the tournament venue.

A physiotherapy service will be available free of charge to players.

The Winner and Runner-up in every event will be presented with a trophy and prize-money

**Badminton Integrity**

Section 2.4 of the BWF Statutes (Code of Conduct in Relation to Betting, Wagering and Irregular Match Results) relates to anti-corruption and anti-match manipulation, and this code applies to all participants at this tournament.

To protect the integrity of BWF sanctioned tournaments, participants are not allowed to bet in any way on badminton matches, respect the principle of fair play, and shall not attempt to influence the course or result of a game or match.

Every person has an obligation to report to the BWF any approaches by anyone to gather inside information or to change the outcome of a matches.

For more information, please refer to BWF's website: <https://corporate.bwfbadminton.com/integrity/anti-match-fixing-overview/>

**Compliance with General Competition Regulations Clause 7.9**

GCR 7.9: *"In making or authorising entries, the Member concerned is reconfirming its acceptance, and acceptance by the Players being entered, of the BWF's regulations and Disciplinary processes."*



# Accommodation Official Tournament Hotel

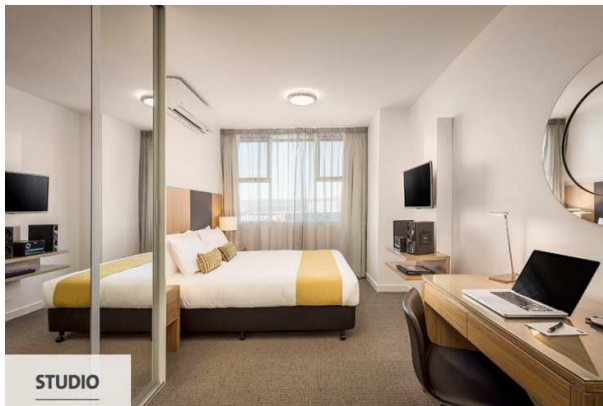


## Quest King William South

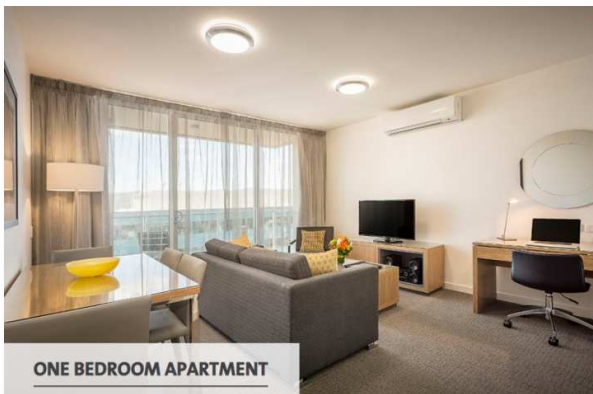
377-379 King William Street, Adelaide SA 5000 Australia | Tel: [+61 8 8206 6500](tel:+61882066500)

Quest King William South is centrally located within Adelaide's CBD precinct and only 6.4km from Adelaide Airport. The apartment hotel is conveniently located near the Adelaide Convention Centre, Adelaide Oval, Women's and Children's Hospital, North Adelaide Golf Course, Adelaide Zoo, Adelaide Central Markets, Adelaide Showground and Rundle Mall.

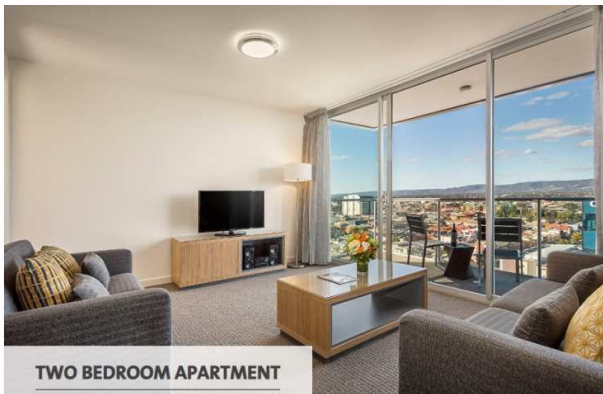
Book online via [https:// https://www.questapartments.com.au/properties/sa/adelaide/quest-king-william-south/overview](https://www.questapartments.com.au/properties/sa/adelaide/quest-king-william-south/overview) and use Promo Code Badminton18 to get special rate or book direct with Quest King William South at the email [manager.questkws@questapartments.com.au](mailto:manager.questkws@questapartments.com.au) and mention the Promo Code.



STUDIO



ONE BEDROOM APARTMENT



TWO BEDROOM APARTMENT



### Accommodation Tariffs

Apartment Type	Nett Rate Per Night	Guests Per Apartment	Bedding Configurations
Studio Apartment	\$140.00	1-2	2x Singles or 1x King
1 Bedroom Apartment	\$160.00	1-2*	2x Singles or 1x King *
2 Bedroom Apartment	\$300.00	1-5*	2x King or 4x Singles *

*\*Sofa Beds / Rollaway can be added for an additional \$40.00 per night*

*\*\*Due to operational requirements and at the hotels discretion a 2 bedroom interconnecting apartment consisting of a Studio & 1 Bedroom maybe allocated in place of a standalone 2 bedroom apartment. Please book early to avoid disappointment as only an allocated number of rooms are available at the tournament rates.*

### Ancillary Tariffs

Ancillary Type	Daily Cost	Additional Information
Internet	WiFi Included	No Data Limit
Car parking	\$25.00 per day	Off Site 24 hours Secure Parking. Reservation required prior to arrival
Breakfast Options	Included <b>Studio &amp; 1 Bedroom apartment:</b> 2 person maximum <b>2 Bedroom apartment:</b> 4 person maximum <b>Additional at \$15.00 per person</b>	Available at our onsite café; Café Society

**Transport to and from the airport and the Tournament venue will only be available to players staying at the official tournament accommodation**